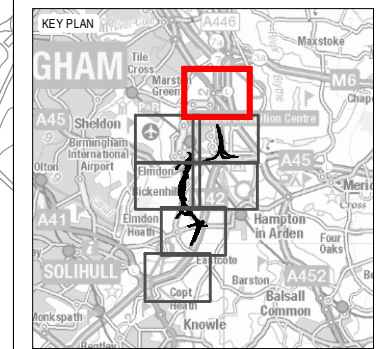


- NOTES**
THIS DRAWING IS TO BE READ IN CONJUNCTION WITH ALL OTHER RELEVANT DOCUMENTATION.
- LEGEND**
- THE SCHEME
 - LIMITS OF LAND TO BE ACQUIRED OR USED PERMANENTLY OR TEMPORARILY (THE ORDER LIMITS)
 - LIMITS OF LAND TO BE TEMPORARILY ACQUIRED FOR SIGNAGE INSTALLATION
 - LAND NOT INCLUDED WITHIN THE ORDER LIMITS
- UTILITIES**
- ESSO PETROLEUM COMPANY LTD
 - LOCAL HIGH PRESSURE MAINS
 - PYLONS WESTERN POWER DISTRIBUTION
 - (11KV) UNDERGROUND WESTERN POWER DISTRIBUTION
 - (132KV) OVERHEAD WESTERN POWER DISTRIBUTION
 - (33KV) UNDERGROUND WESTERN POWER DISTRIBUTION
 - LOW VOLTAGE UNDERGROUND WESTERN POWER DISTRIBUTION
 - NATIONAL GRID (440KV) OVERHEADLINES
 - WATER MAIN SEVERN TRENT WATER



*Buried service plans provided by utility companies are for identification purposes only and no warranty as to accuracy is given or implied. Services or recent additions to the network may not be shown.
Information provided by Groundwise 27/November/2017*

FIRST ISSUE	GB	JG	12/12/18	C01
Revision Details	By	Check	Date	Suffix

Purpose of Issue
DCO SUBMISSION

Client
Highways England
Floor 5
Two Colmore Square
38 Colmore Circus
B4 6BN



Development Consent Order Number
TR010027

Project Title
M42 JUNCTION 6 IMPROVEMENT

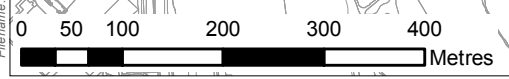
Drawing Title
FIGURE 10.5 IDENTIFIED RECEPTORS KNOWN UTILITIES SHEET 1 OF 7

Designed RG	Drawn GB	Checked RG	Approved JG	Date 12/12/18
Internal Project No 60543032			Suitability D7	
Scale @ A3 1:7,500			Zone M42	

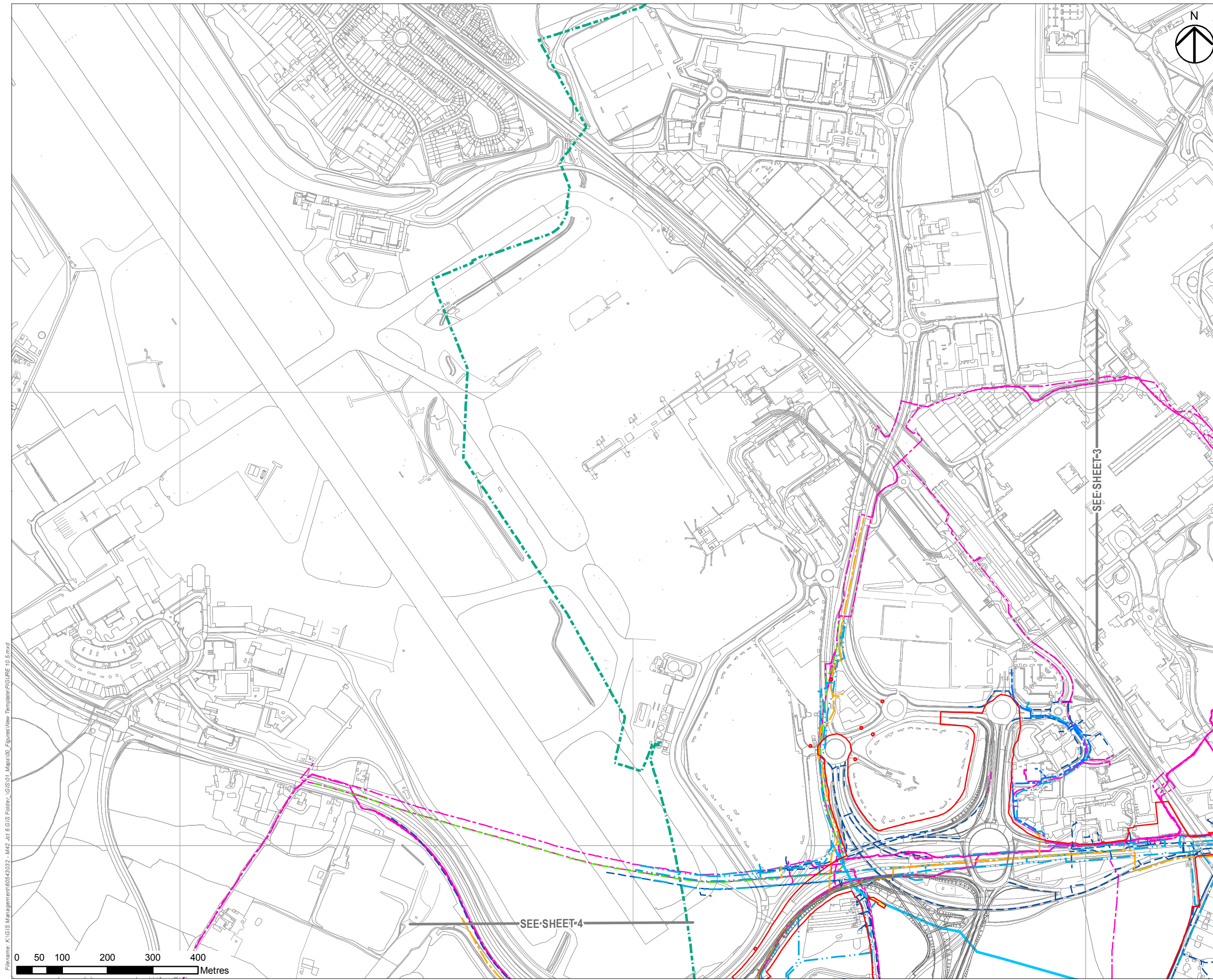
THIS DOCUMENT HAS BEEN PREPARED PURSUANT TO AND SUBJECT TO THE TERMS OF AECOM'S APPOINTMENT BY ITS CLIENT. AECOM ACCEPTS NO LIABILITY FOR ANY USE OF THIS DOCUMENT OTHER THAN BY ITS ORIGINAL CLIENT OR FOLLOWING AECOM'S EXPRESS AGREEMENT TO SUCH USE, AND ONLY FOR THE PURPOSES FOR WHICH IT WAS PREPARED AND PROVIDED.

Drawing Number HE551485 -ACM	Originator -EGN-	Volume -DR-DC-0017	Rev C01
Location M42_SW_ZZ_ZZ	Type 1	Role 1	Number 1

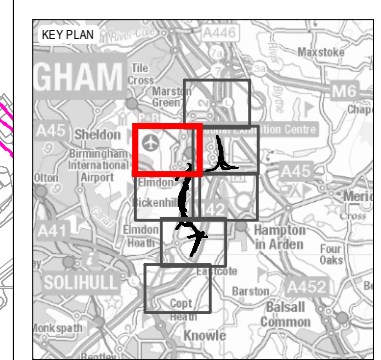
Filename: K:\GIS Management\60543032 - M42 Jct 6 GIS Folder - GIS01 - Maps\100 - Figures\New Template\FIGURE 10.5.mxd



SEE SHEET-3



- NOTES**
THIS DRAWING IS TO BE READ IN CONJUNCTION WITH ALL OTHER RELEVANT DOCUMENTATION.
- LEGEND**
- THE SCHEME
 - LIMITS OF LAND TO BE ACQUIRED OR USED PERMANENTLY OR TEMPORARILY (THE ORDER LIMITS)
 - LIMITS OF LAND TO BE TEMPORARILY ACQUIRED FOR SIGNAGE INSTALLATION
 - LAND NOT INCLUDED WITHIN THE ORDER LIMITS
- UTILITIES**
- ESO PETROLEUM COMPANY LTD
 - LOW PRESSURE MAINS
 - MEDIUM PRESSURE MAINS
 - (11KV) UNDERGROUND WESTERN POWER DISTRIBUTION
 - (33KV) UNDERGROUND WESTERN POWER DISTRIBUTION
 - LOW VOLTAGE OVERHEAD WESTERN POWER DISTRIBUTION
 - LOW VOLTAGE UNDERGROUND WESTERN POWER DISTRIBUTION
 - UNCONFIRMED AQUEDUCT
 - WATER MAIN SEVERN TRENT WATER



*Buried service plans provided by utility companies are for identification purposes only and no warranty as to accuracy is given or implied. Services or recent additions to the network may not be shown.
Information provided by Groundwise 27/November/2017*

Revision Details	By	Check	Date	Suffix
FIRST ISSUE	GB	JG	12/12/18	C01

Purpose of Issue
DCO SUBMISSION

Client
Highways England
Floor 5
Two Colmore Square
38 Colmore Circus
B4 6BN



Development Consent Order Number
TR010027

Project Title
M42 JUNCTION 6 IMPROVEMENT

Drawing Title
FIGURE 10.5 IDENTIFIED RECEPTORS KNOWN UTILITIES SHEET 2 OF 7

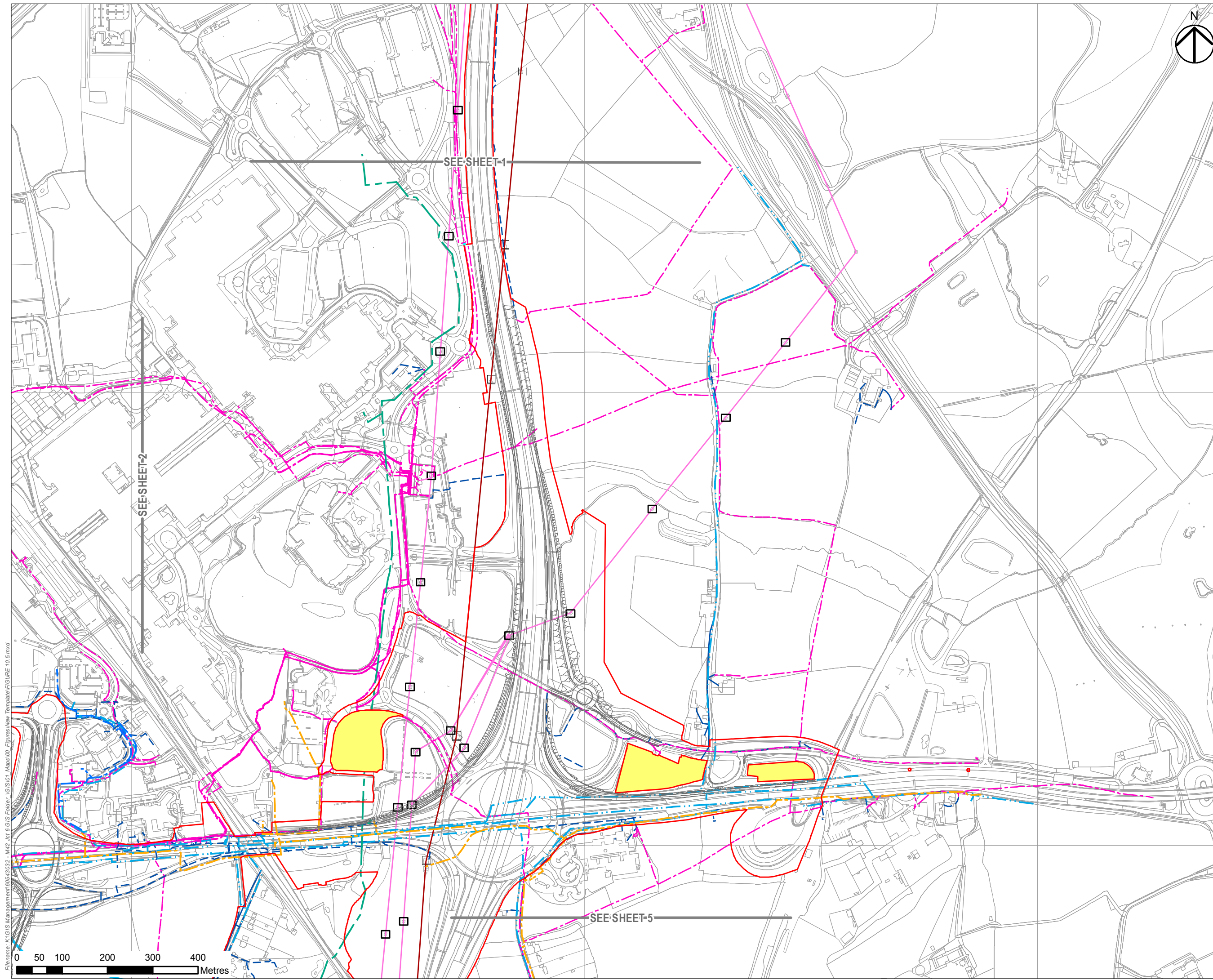
Designed	Drawn	Checked	Approved	Date
RG	GB	RG	JG	12/12/18

Internal Project No: 60543032
Sustainability: D7
Scale @ A3: 1:7,500
Zone: M42

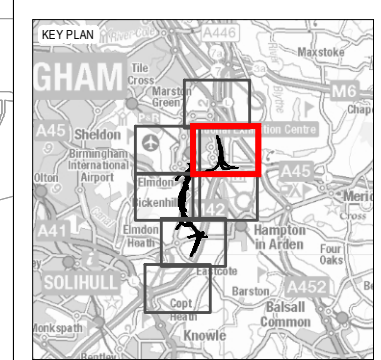
THIS DOCUMENT HAS BEEN PREPARED PURSUANT TO AND SUBJECT TO THE TERMS OF AECOM'S APPOINTMENT BY ITS CLIENT. AECOM ACCEPTS NO LIABILITY FOR ANY USE OF THIS DOCUMENT OTHER THAN BY ITS ORIGINAL CLIENT OR FOLLOWING AECOM'S EXPRESS AGREEMENT TO SUCH USE, AND ONLY FOR THE PURPOSES FOR WHICH IT WAS PREPARED AND PROVIDED.

Drawing Number	Highways England Pin	Originator	Volume	Rev
HE551485	-ACM	-EGN-		C01
M42_SW_ZZ_ZZ	-DR-DC-0018			

Filename: K:\GIS Management\60543032 - M42 Jct 6 GIS Folder - GIS01 - Figures\New Template\FIGURE 10.5.mxd



- NOTES**
THIS DRAWING IS TO BE READ IN CONJUNCTION WITH ALL OTHER RELEVANT DOCUMENTATION.
- LEGEND**
- THE SCHEME
 - LIMITS OF LAND TO BE ACQUIRED OR USED PERMANENTLY OR TEMPORARILY (THE ORDER LIMITS)
 - - - LIMITS OF LAND TO BE TEMPORARILY ACQUIRED FOR SIGNAGE INSTALLATION
 - LAND NOT INCLUDED WITHIN THE ORDER LIMITS
- UTILITIES**
- LOCAL HIGH PRESSURE MAINS
 - LOW PRESSURE MAINS
 - MEDIUM PRESSURE MAINS
 - PYLONS WESTERN POWER DISTRIBUTION
 - (11KV) UNDERGROUND WESTERN POWER DISTRIBUTION
 - (132KV) OVERHEAD WESTERN POWER DISTRIBUTION
 - LOW VOLTAGE OVERHEAD WESTERN POWER DISTRIBUTION
 - LOW VOLTAGE UNDERGROUND WESTERN POWER DISTRIBUTION
 - NATIONAL GRID (440KV) OVERHEADLINES
 - UNCONFIRMED AQUEDUCT
 - - - WATER MAIN SEVERN TRENT WATER



*Buried service plans provided by utility companies are for identification purposes only and no warranty as to accuracy is given or implied. Services or recent additions to the network may not be shown.
Information provided by Groundwise 27/November/2017*

FIRST ISSUE	GB	JG	12/12/18	C01
Revision Details	By	Check	Date	Suffix

Purpose of Issue
DCO SUBMISSION

Client
Highways England
Floor 5
Two Colmore Square
38 Colmore Circus
B4 6BN



Development Consent Order Number
TR010027

Project Title
M4 JUNCTION 6 IMPROVEMENT

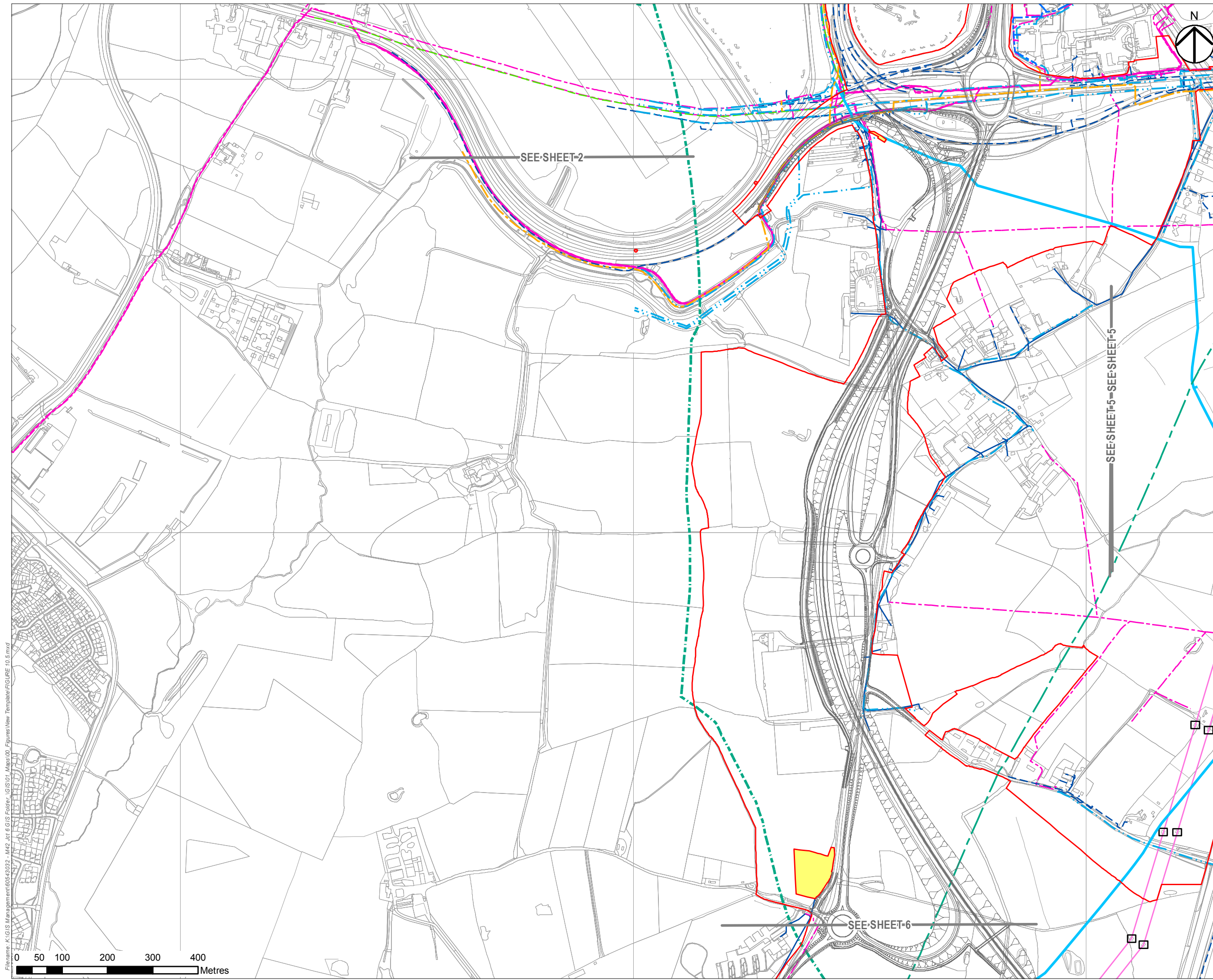
Drawing Title
FIGURE 10.5 IDENTIFIED RECEPTORS KNOWN UTILITIES SHEET 3 OF 7

Designed RG	Drawn GB	Checked RG	Approved JG	Date 12/12/18
Internal Project No 60543032		Suitability D7		
Scale @ A3 1:7,500		Zone M42		

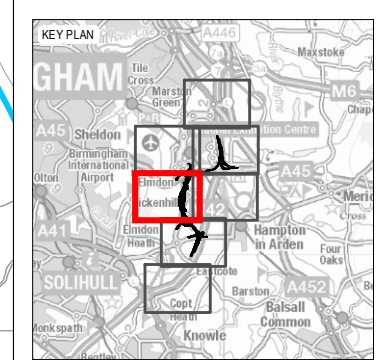
THIS DOCUMENT HAS BEEN PREPARED PURSUANT TO AND SUBJECT TO THE TERMS OF AECOM'S APPOINTMENT BY ITS CLIENT. AECOM ACCEPTS NO LIABILITY FOR ANY USE OF THIS DOCUMENT OTHER THAN BY ITS ORIGINAL CLIENT OR FOLLOWING AECOM'S EXPRESS AGREEMENT TO SUCH USE, AND ONLY FOR THE PURPOSES FOR WHICH IT WAS PREPARED AND PROVIDED.

Drawing Number HE551485 -ACM -EGN-	Originator M42_SW_ZZ_ZZ -DR-DC-0019	Volume 1	Rev C01
---------------------------------------	--	-------------	------------

Filename: K:\GIS Management\60543032 - M42 Jct 6 GIS folder - GIS\01 - Maps\01 - Figures\New Template\FIGURE 10.5.mxd



- NOTES**
THIS DRAWING IS TO BE READ IN CONJUNCTION WITH ALL OTHER RELEVANT DOCUMENTATION.
- LEGEND**
- THE SCHEME
 - LIMITS OF LAND TO BE ACQUIRED OR USED PERMANENTLY OR TEMPORARILY (THE ORDER LIMITS)
 - LIMITS OF LAND TO BE TEMPORARILY ACQUIRED FOR SIGNAGE INSTALLATION
 - LAND NOT INCLUDED WITHIN THE ORDER LIMITS
- UTILITIES**
- ESSO PETROLEUM COMPANY LTD
 - LOCAL HIGH PRESSURE MAINS
 - LOW PRESSURE MAINS
 - MEDIUM PRESSURE MAINS
 - PYLONS WESTERN POWER DISTRIBUTION
 - (11KV) UNDERGROUND WESTERN POWER DISTRIBUTION
 - (132KV) OVERHEAD WESTERN POWER DISTRIBUTION
 - (33KV) UNDERGROUND WESTERN POWER DISTRIBUTION
 - LOW VOLTAGE OVERHEAD WESTERN POWER DISTRIBUTION
 - LOW VOLTAGE UNDERGROUND WESTERN POWER DISTRIBUTION
 - UNCONFIRMED AQUEDUCT
 - WATER MAIN SEVERN TRENT WATER



Buried service plans provided by utility companies are for identification purposes only and no warranty as to accuracy is given or implied. Services or recent additions to the network may not be shown.
Information provided by Groundwise 27/November/2017

FIRST ISSUE	GB	12/12/18	C01
Revision Details	By	Date	Suffix
	Check		

Purpose of Issue
DCO SUBMISSION

Client
Highways England
Floor 5
Two Colmore Square
38 Colmore Circus
B4 6BN



Development Consent Order Number
TR010027

Project Title
M42 JUNCTION 6 IMPROVEMENT

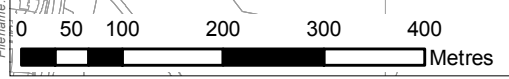
Drawing Title
FIGURE 10.5 IDENTIFIED RECEPTORS KNOWN UTILITIES SHEET 4 OF 7

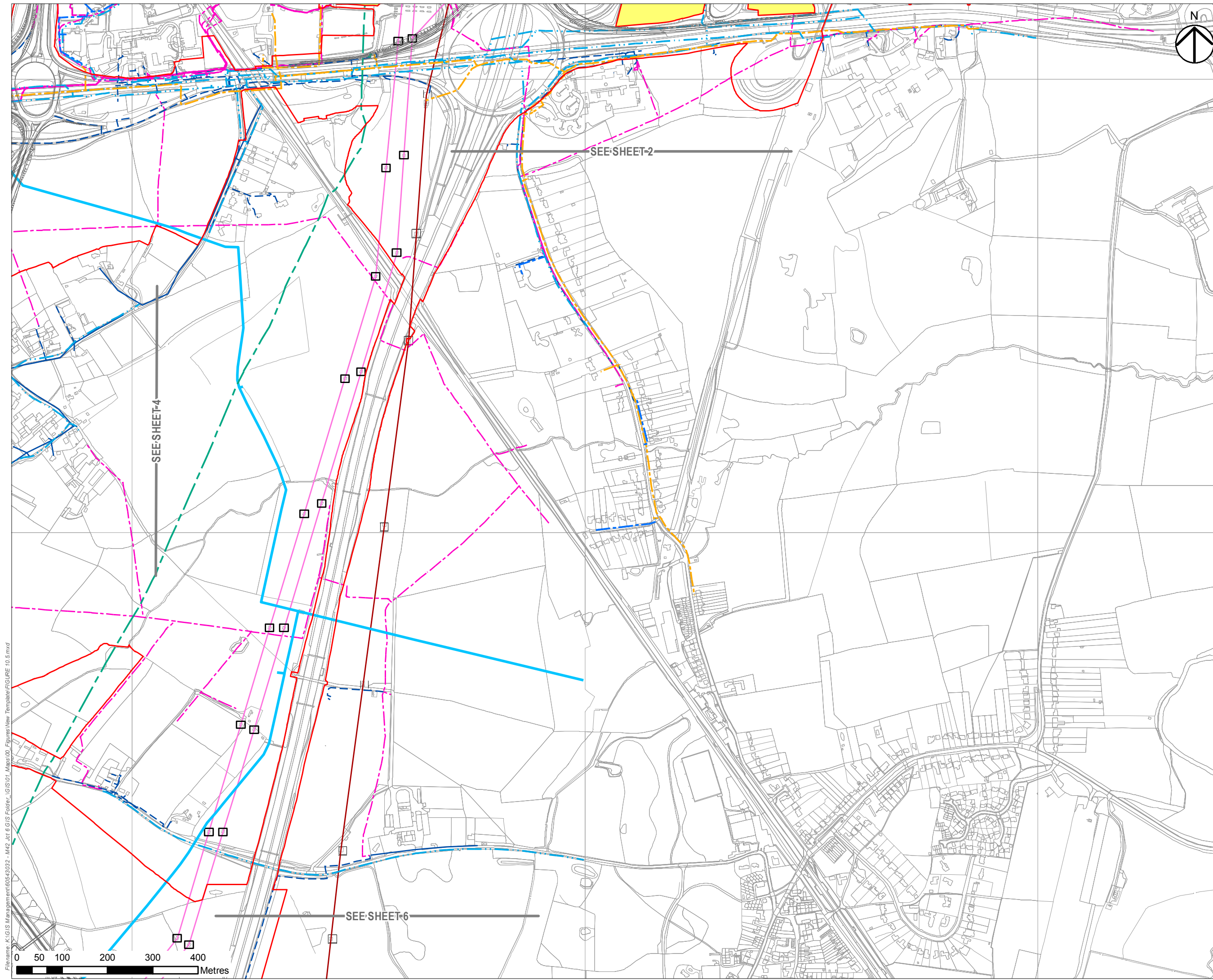
Designed RG	Drawn GB	Checked RG	Approved JG	Date 12/12/18
Internal Project No 60543032		Suitability D7		
Scale @ A3 1:7,500		Zone M42		

THIS DOCUMENT HAS BEEN PREPARED PURSUANT TO AND SUBJECT TO THE TERMS OF AECOM'S APPOINTMENT BY ITS CLIENT. AECOM ACCEPTS NO LIABILITY FOR ANY USE OF THIS DOCUMENT OTHER THAN BY ITS ORIGINAL CLIENT OR FOLLOWING AECOM'S EXPRESS AGREEMENT TO SUCH USE, AND ONLY FOR THE PURPOSES FOR WHICH IT WAS PREPARED AND PROVIDED.

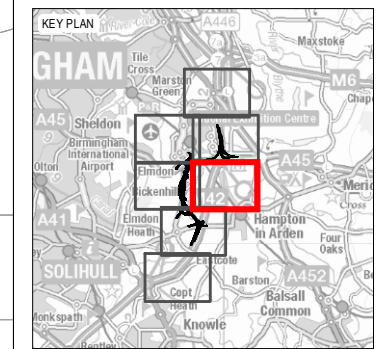
Drawing Number HE551485 -ACM -EGN-	Originator M42_SW_ZZ_ZZ -DR-DC-0020	Volume -EGN-	Rev C01
Location	Type	Role	Number

Filename: K:\GIS Management\60543032 - M42 Jct 6 GIS folder - GIS\01 - Maps\00 - Figures\New Template\FIGURE 10.5.mxd





- NOTES**
THIS DRAWING IS TO BE READ IN CONJUNCTION WITH ALL OTHER RELEVANT DOCUMENTATION.
- LEGEND**
- THE SCHEME
 - LIMITS OF LAND TO BE ACQUIRED OR USED PERMANENTLY OR TEMPORARILY (THE ORDER LIMITS)
 - LIMITS OF LAND TO BE TEMPORARILY ACQUIRED FOR SIGNAGE INSTALLATION
 - LAND NOT INCLUDED WITHIN THE ORDER LIMITS
- UTILITIES**
- LOCAL HIGH PRESSURE MAINS
 - LOW PRESSURE MAINS
 - MEDIUM PRESSURE MAINS
 - PYLONS WESTERN POWER DISTRIBUTION
 - (11KV) UNDERGROUND WESTERN POWER DISTRIBUTION
 - (132KV) OVERHEAD WESTERN POWER DISTRIBUTION
 - LOW VOLTAGE OVERHEAD WESTERN POWER DISTRIBUTION
 - LOW VOLTAGE UNDERGROUND WESTERN POWER DISTRIBUTION
 - NATIONAL GRID (440KV) OVERHEADLINES
 - UNCONFIRMED AQUEDUCT
 - WATER MAIN SEVERN TRENT WATER



*Buried service plans provided by utility companies are for identification purposes only and no warranty as to accuracy is given or implied. Services or recent additions to the network may not be shown.
Information provided by Groundwise 27/November/2017*

FIRST ISSUE	GB	JG	12/12/18	C01
Revision Details	By	Check	Date	Suffix

Purpose of Issue
DCO SUBMISSION

Client
Highways England
Floor 5
Two Colmore Square
38 Colmore Circus
B4 6BN



Development Consent Order Number
TR010027

Project Title
M42 JUNCTION 6 IMPROVEMENT

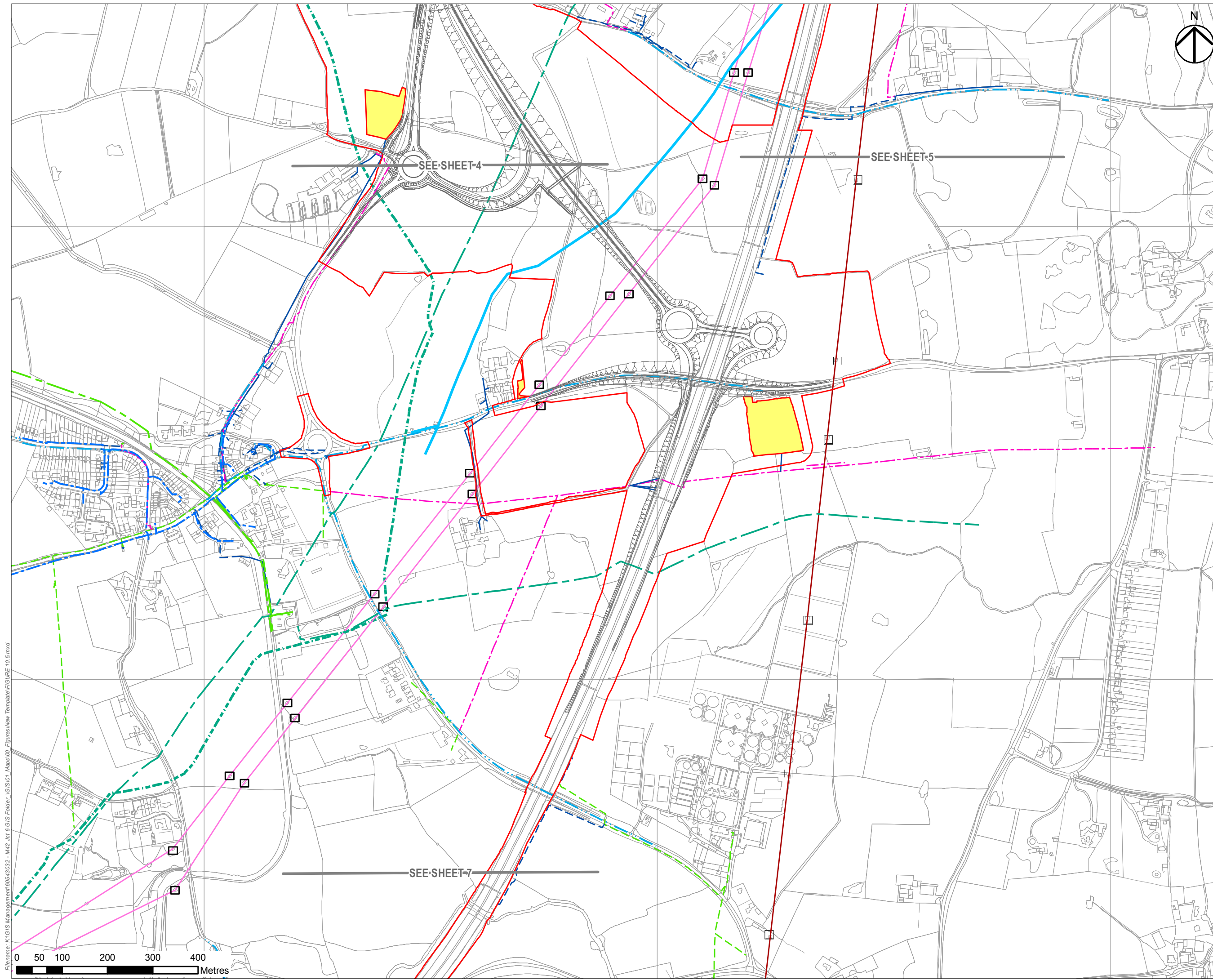
Drawing Title
FIGURE 10.5 IDENTIFIED RECEPTORS KNOWN UTILITIES SHEET 5 OF 7

Designed RG	Drawn GB	Checked RG	Approved JG	Date 12/12/18
Internal Project No 60543032			Suitability D7	
Scale @ A3 1:7,500			Zone M42	

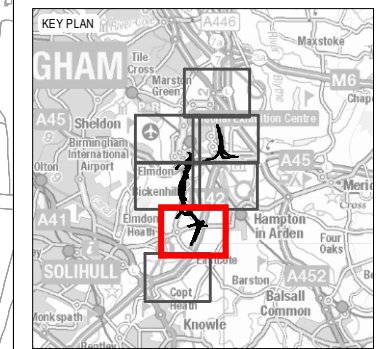
THIS DOCUMENT HAS BEEN PREPARED PURSUANT TO AND SUBJECT TO THE TERMS OF AECOM'S APPOINTMENT BY ITS CLIENT. AECOM ACCEPTS NO LIABILITY FOR ANY USE OF THIS DOCUMENT OTHER THAN BY ITS ORIGINAL CLIENT OR FOLLOWING AECOM'S EXPRESS AGREEMENT TO SUCH USE, AND ONLY FOR THE PURPOSES FOR WHICH IT WAS PREPARED AND PROVIDED.

Drawing Number HE551485 -ACM	Originator -EGN-	Volume M42_SW_ZZ_ZZ -DR-DC-0021	Rev C01
Location	Type	Role	Number

Filename: K:\GIS Management\60543032 - M42 Jct 6 GIS folder_GIS01_Maps\00_Figures\New Template\FIGURE 10.5.mxd



- NOTES**
 THIS DRAWING IS TO BE READ IN CONJUNCTION WITH ALL OTHER RELEVANT DOCUMENTATION.
- LEGEND**
- THE SCHEME
 - LIMITS OF LAND TO BE ACQUIRED OR USED PERMANENTLY OR TEMPORARILY (THE ORDER LIMITS)
 - LIMITS OF LAND TO BE TEMPORARILY ACQUIRED FOR SIGNAGE INSTALLATION
 - LAND NOT INCLUDED WITHIN THE ORDER LIMITS
- UTILITIES**
- ESO PETROLEUM COMPANY LTD
 - IP MAINS
 - LOCAL HIGH PRESSURE MAINS
 - LOW PRESSURE MAINS
 - PYLONS WESTERN POWER DISTRIBUTION
 - (11KV) UNDERGROUND WESTERN POWER DISTRIBUTION
 - (132KV) OVERHEAD WESTERN POWER DISTRIBUTION
 - (33KV) UNDERGROUND WESTERN POWER DISTRIBUTION
 - LOW VOLTAGE OVERHEAD WESTERN POWER DISTRIBUTION
 - LOW VOLTAGE UNDERGROUND WESTERN POWER DISTRIBUTION
 - NATIONAL GRID (440KV) OVERHEADLINES
 - UNCONFIRMED AQUEDUCT
 - WATER MAIN SEVERN TRENT WATER



*Buried service plans provided by utility companies are for identification purposes only and no warranty as to accuracy is given or implied. Services or recent additions to the network may not be shown.
 Information provided by Groundwise 27/November/2017*

FIRST ISSUE	GB	JG	12/12/18	C01
Revision Details	By	Check	Date	Suffix

Purpose of Issue
DCO SUBMISSION

Client
 Highways England
 Floor 5
 Two Colmore Square
 38 Colmore Circus
 B4 6BN



Development Consent Order Number
TR010027

Project Title
M42 JUNCTION 6 IMPROVEMENT

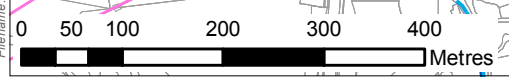
Drawing Title
FIGURE 10.5 IDENTIFIED RECEPTORS KNOWN UTILITIES SHEET 6 OF 7

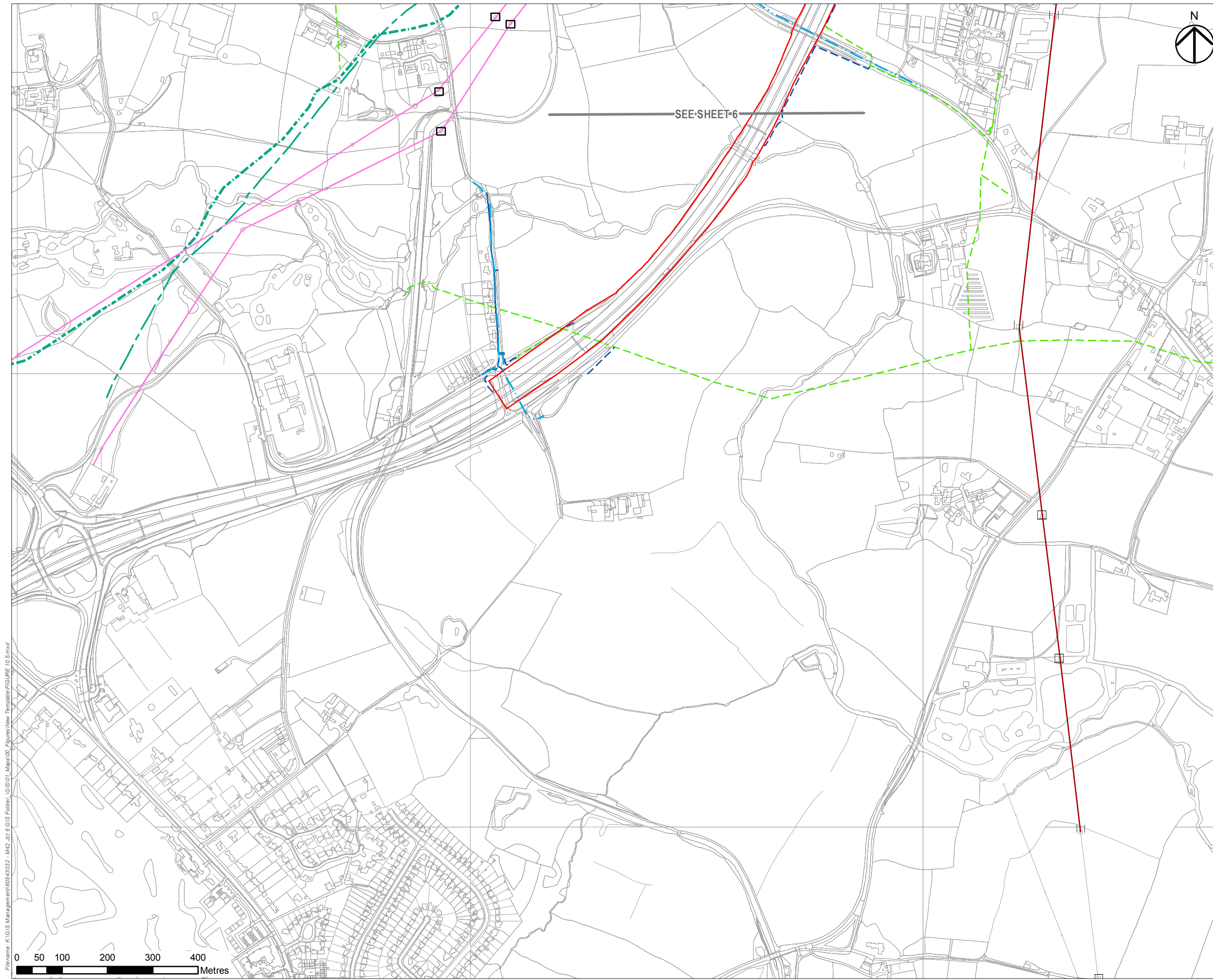
Designed	Drawn	Checked	Approved	Date
RG	GB	RG	JG	12/12/18
Internal Project No 60543032		Suitability D7		
Scale @ A3 1:7,500		Zone M42		

THIS DOCUMENT HAS BEEN PREPARED PURSUANT TO AND SUBJECT TO THE TERMS OF AECOM'S APPOINTMENT BY ITS CLIENT. AECOM ACCEPTS NO LIABILITY FOR ANY USE OF THIS DOCUMENT OTHER THAN BY ITS ORIGINAL CLIENT OR FOLLOWING AECOM'S EXPRESS AGREEMENT TO SUCH USE, AND ONLY FOR THE PURPOSES FOR WHICH IT WAS PREPARED AND PROVIDED.

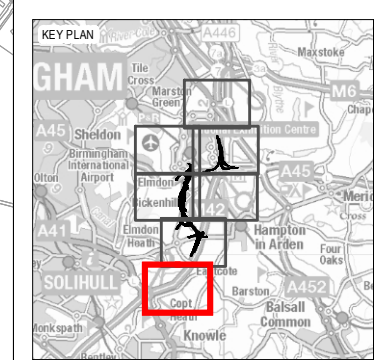
Drawing Number	Originator	Volume	Rev
HE551485 -ACM	-EGN-		C01
M42_SW_ZZ_ZZ	-DR-DC-0022		
Location	Type	Role	Number

File name: K:\GIS Management\60543032 - M42 Jct 6 GIS folder_GIS01_Maps\00_Figures\New Template\FIGURE 10.5.mxd
 This map is based upon Ordnance Survey material with the permission of Ordnance Survey on behalf of the Controller of Her Majesty's Stationery Office © Crown copyright. Unauthorised reproduction infringes Crown copyright and may lead to prosecution or civil proceedings. Highways England 100030649 2018





- NOTES**
THIS DRAWING IS TO BE READ IN CONJUNCTION WITH ALL OTHER RELEVANT DOCUMENTATION.
- LEGEND**
- THE SCHEME
 - LIMITS OF LAND TO BE ACQUIRED OR USED PERMANENTLY OR TEMPORARILY (THE ORDER LIMITS)
 - LIMITS OF LAND TO BE TEMPORARILY ACQUIRED FOR SIGNAGE INSTALLATION
 - LAND NOT INCLUDED WITHIN THE ORDER LIMITS
- UTILITIES**
- ESSO PETROLEUM COMPANY LTD
 - LOCAL HIGH PRESSURE MAINS
 - PYLONS WESTERN POWER DISTRIBUTION
 - (132KV) OVERHEAD WESTERN POWER DISTRIBUTION
 - (33KV) UNDERGROUND WESTERN POWER DISTRIBUTION
 - LOW VOLTAGE OVERHEAD WESTERN POWER DISTRIBUTION
 - LOW VOLTAGE UNDERGROUND WESTERN POWER DISTRIBUTION
 - NATIONAL GRID (440KV) OVERHEADLINES
 - WATER MAIN SEVERN TRENT WATER



*Buried service plans provided by utility companies are for identification purposes only and no warranty as to accuracy is given or implied. Services or recent additions to the network may not be shown.
Information provided by Groundwise 27/November/2017*

FIRST ISSUE	GB	JG	12/12/18	C01
Revision Details	By	Check	Date	Suffix

Purpose of Issue
DCO SUBMISSION

Client
Highways England
Floor 5
Two Colmore Square
38 Colmore Circus
B4 6BN



Development Consent Order Number
TR010027

Project Title
M42 JUNCTION 6 IMPROVEMENT

Drawing Title
FIGURE 10.5 IDENTIFIED RECEPTORS KNOWN UTILITIES SHEET 7 OF 7

Designed	Drawn	Checked	Approved	Date
RG	RG	RG	JG	12/12/18

Internal Project No: 60543032 | Suitability: D7
Scale @ A3: 1:7,500 | Zone: M42

THIS DOCUMENT HAS BEEN PREPARED PURSUANT TO AND SUBJECT TO THE TERMS OF AECOM'S APPOINTMENT BY ITS CLIENT. AECOM ACCEPTS NO LIABILITY FOR ANY USE OF THIS DOCUMENT OTHER THAN BY ITS ORIGINAL CLIENT OR FOLLOWING AECOM'S EXPRESS AGREEMENT TO SUCH USE, AND ONLY FOR THE PURPOSES FOR WHICH IT WAS PREPARED AND PROVIDED.

Drawing Number	Originator	Volume	Rev
HE551485 -ACM	-EGN-		C01
M42_SW_ZZ_ZZ	-DR-DC-0023		
Location	Type	Role	Number

Filename: K:\GIS Management\60543032 - M42 Jct 6 GIS Folder - GIS01 - Figures\New Template\FIGURE 10.5.mxd

